

User Manual

Galaxis Showtechnik

PYROTEC

PFE Profi Audio

approved for flash memory cards with 64 MB - 32 GB



Firmware V3.07
Revision date: January 30th 2025

Batch No.: EUE600101




Table of Contents

1	Introduction.....	3
1.1	Safety instructions	3
1.2	Requirements the operator has to fulfill and necessary qualification.....	3
2	Illustrations	4
2.1	Description of indicators and control elements.....	5
3	Compatibility.....	6
4	Information regarding the firmware version.....	6
5	Applications	6
5.1	Introduction and preliminary remarks	7
5.2	Saving music on the flash memory card	8
5.3	Installing and operating the "Project Maker"	9
6	Basic operation of the device	13
6.1	Automatic hardware checks after powering up	13
6.1.1	The error message "Memory Error!".....	13
6.1.2	The message "Memory Maintenance".....	13
6.1.3	Battery monitoring and warning message in case of deep discharges	13
6.2	Reset of acoustic warning "Deep discharge" (AF, Accu Failure)	13
6.3	Reset of optical warning "Deep Discharge" (AF, Accu Failure)	14
6.4	Switching on the PFE Profi Audio, Operating time.....	14
7	Menu.....	15
7.1	The menu item "Up/Down Delay/Volume".....	15
7.2	The menu item "Channel & Delay keep up/clear"	15
7.3	The menu item "Operation Mode"	16
8	Receiving mode.....	18
8.1	Display of radio interferences	19
8.2	Display of the results of the radio range test	19
8.3	Changing of deep discharge counter reset code (accumulator failure, AF).....	20
8.4	Using the delay function	20
8.5	Playing back the audio track.....	23
8.6	Radio commands "Pause" und "Resume Play".....	24
8.7	The output of time code signals (SMPTE).....	24
8.8	Teach-in of the system ID.....	25
9	Connecting the PFE Profi Audio to a PA system	25
10	Operation of a headphone.....	26
11	Operation of speakers	26
12	Protection against moisture and humidity	26
13	Maintenance	26
14	Warranty	26
15	Damages caused by malfunction, misuse, abuse or neglect.....	27
16	Technical data	27
17	Accessories	29
18	CE marking.....	29
19	Address of the manufacturer and contact details for requesting an EU declaration of conformity ..	29

1 Introduction

1.1 Safety instructions

Observe all safety instructions in this documentation! Safety instructions warn of dangers when handling devices and provide information on how to avoid them. They are classified according to the severity of the danger and divided into the following groups:

<p>DANGER</p> 	<p>Danger signals dangers for persons. If you do not follow the instructions for avoiding the hazard, the hazard will certainly result in death or serious physical injury.</p>
<p>WARNING</p> 	<p>Warning indicates dangers for persons. If you do not follow the instructions for avoiding the hazard, the hazard is likely to result in death or serious injury.</p>
<p>CAUTION</p> 	<p>Caution indicates danger to persons. If you do not follow the instructions for avoiding the hazard, the hazard is likely to result in minor physical injury.</p>
<p>NOTICE</p>	<p>Note signals dangers for objects or data. If you do not follow the instructions for avoiding the hazard, the hazard will probably result in damage to property.</p>
<p>TIP</p>	<p>A tip provides additional or supplementary information.</p>

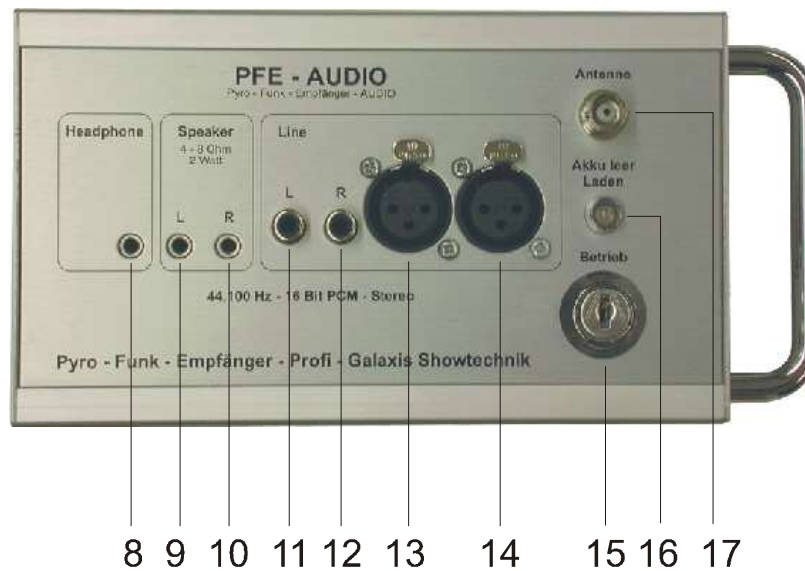
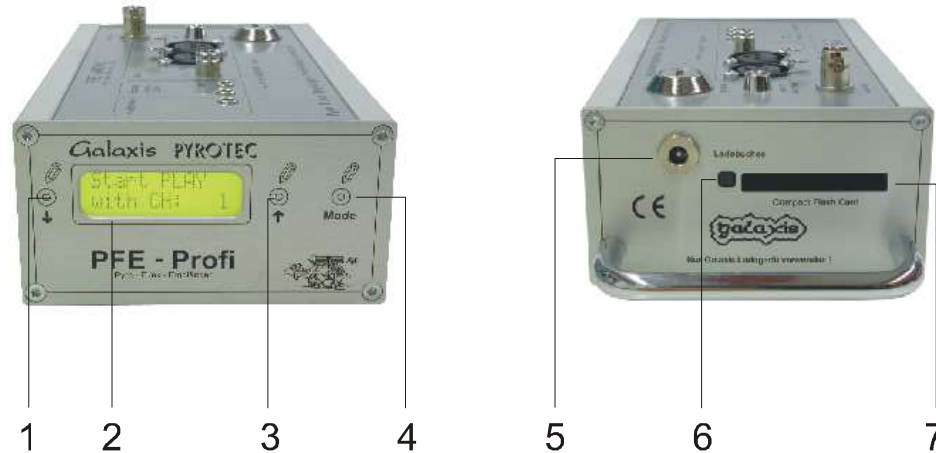
1.2 Requirements the operator has to fulfill and necessary qualification

This product may only be operated by persons of legal age. In Germany the user must be at least 18 years of age.

This product may only be used within the scope of a professional and occupational activity.

Galaxis PYROTEC PFE Profi Audio

Front view, rear view, top view, showing display and control elements



2.1 Description of indicators and control elements

1	Magnetic sensor "Down"	By pointing to this area with the magnetic pen the parameter in the display will be decreased or changed. If you point on this field for a longer time the parameter will decrease automatically.
2	LC-Display	Displays the current information.
3	Magnetic sensor "Up"	By pointing to this area with the magnetic pen the parameter in the display will be increased or changed. If you point on this field for a longer time the parameter will decrease automatically.
4	Magnetic sensor "Mode"	By pointing to this area for some time, you will enter the menu. If you point to this field for a longer time, you will step through the different menu items automatically. At the end you will return to the receiving mode again.
5	"Ladebuchse"	Connect the charging unit here.
6	Eject button	Eject button for flash memory card.
7	Slot for Compact Flash Card	The flash memory card is being inserted into this slot. When inserting the card, the electric contacts of the card have to face towards the device and the sticker on the card (sticker with information about the memory size on the card) has to face upwards.
8	"Headphone"	Connect a headphone here.
9 10	"Speaker L" "Speaker R"	Speaker output for the direct use of a pair of speakers. L = left channel, R = right channel
11 12 13 14	"Line L" RCA "Line R" RCA "Line L" XLR "Line R" XLR	Line output; L = left channel, R = right channel Connect your amplifier here. You can choose between RCA connectors and XLR connectors. RCA connectors are typically used for hi-fi applications whereas XLR connectors are a commonly used for PA.
15	"Betrieb"	Power; Key switch to turn the device on or off.
16	Display "Akku leer / Laden"	Display for accumulator; The display shines red if the accumulator is low (30% or less). The display shines green if the accumulator is being charged.
17	"Antenne"	The antenna is connected here.

3 Compatibility

This device can be controlled by the following transmitters:

- PFS Profi
- PFS Pocket
- PFC Advanced Standard
- PFC Advanced Black Edition

4 Information regarding the firmware version

The firmware of the devices is continuously developed. Information about changes between different firmware versions is available on request. Please inform us about the version you are currently using. We will then send you an easy-to-understand extract from the firmware revision history.

5 Applications

The PFE Profi Audio is the right choice to supply a stereo audio signal of supreme audio quality (unpacked CD quality) to a music synchronized fireworks display.

The PFE Profi Audio does not use any data compression. When using most of the common data compression techniques (e.g. MP3) acoustic quality losses are unavoidable and the poor quality is obvious not only for professionals. Data compression techniques (e.g. MP3) usually reduce the dynamic range and the surround sound of the music which is the main reason why it should not be used by professionals in the entertainment industry. Furthermore, MP3 decoder add a significant noise figure to the audio signal.

It does not make any difference to you if your program for firing the fireworks is computer based (using the Galaxis PYROTEC Composer) or you are using a conventional technique. At the beginning of your fireworks display you simply start the PFE Profi Audio by a radio command.

The advantages are apparent:

- You do not have to worry any longer about starting the CD player and the transmitter exactly at the same moment. Imprecise count downs to press the two buttons of the transmitter and the CD player at the same time will not be necessary any more.
- The PFE Profi Audio is playing the music absolutely precise. Even expensive high-end CD players are imprecise which can result in timing differences between the fireworks display and the music being played. Differences of some seconds can possibly occur in only a few minutes of playing.
- The PFE Profi Audio is playing the music from a flash memory card. A flash memory card is vibration-proof, dust-proof, scratch-proof, resistant to heat and cold and even moisture-proof. All these factors mentioned above could lead to serious problems when using a conventional CD player for your music synchronized fireworks displays.
- You may use as many PFE Profi Audio at the same time as you want and you can use them as a source of a stereo audio signal at every place. Isolated applications are possible without restrictions. E.g. music on ships with spectators aboard or loudspeakers on different attractions in a theme park or on a fair ground. If you are using active loudspeakers no additional devices like mixers or amplifiers are necessary.
- The integrated delay function enables you to adjust the audio signal precisely to the different acoustic delays (as a result of the speed of sound) without having to use expensive and complex delay line solutions.
- The adjustment of the delay parameter can be done dynamically – while the device is playing back

the audio track. This helps you to easily find the right setting and to optimize the music performance within a single test run. With firmware version 2.71e or later the delay parameter can only be adjusted while the device is playing if the test channel has been fired.

- Compared to conventional delay lines the PFE Profi Audio can even work with negative delays. By doing so the overall timing error caused by the speed of sound can be reduced by 50% and it is even possible to deliver sound to a special group, like the jury of a fireworks festival, with no acoustic delay at all.
- When using the PFE Profi Audio running long cables is not necessary any more. Short cables help to maximize the sound quality because long cable runs can lead to a loss of quality. Note: The music itself is not being transmitted by radio – only the start signal is transmitted via radio.
- To play more than two audio tracks at the same time it is possible to use more than one PFE Profi Audio and starting them simultaneously. If necessary, e.g. surround sound applications can easily be achieved.
- Instead of music it is possible to deliver time code - like SMPTE - to other applications or systems in order to synchronize these with the pyrotechnical performance.

5.1 Introduction and preliminary remarks

For a better understanding of this operation manual an explanation to some terms and proper nouns will be given:

A "wave file" (*.WAV) is an audio file. It contains unpacked (uncompressed) audio information. There is a number of different wave files and they vary in quality (mono/stereo, sampling rate, bits per sample). For all products of Galaxis you should only use wave files with the following specifications: Stereo (2 channels), sampling rate 44,100 Hz (44.1 kHz), 16 Bits per sample and per channel. These parameters are the specifications for CD quality. Other wave files that are not complying with this specification can not be used for this application or might cause various failures.

The "Galaxis Composer" is a software application which has been developed to create the script for music synchronized fireworks displays on the computer.

A "GPF file" (*.GPF) is a file which has been generated by the "Galaxis Composer". The GPF file contains audio data. GPF is the abbreviation for "Galaxis Project File". The PFE Profi Audio is exclusively playing GPF files.

A "ZIP file" (*.ZIP) is a file which contains packed (i.e. compressed) data and is usually called an "archive". The widely used software WinZip® can be used to unpack (extract / unzip) this file.

In this operation manual the word "flash memory card" or "memory card" or "card" always refers to CompactFlash® cards of type 1. These flash memory cards are frequently being used for digital photography and do have the best capacity/price ratio (price per MB memory) compared to other flash memory cards.

Guideline: 1 minute of music requires approximately 10 MB of memory on the card.

Notes regarding the trade marks "®":

CF®, CompactFlash® are trademarks or registered trademarks in the USA and / or other countries of the CompactFlash Association. CompactFlash™ is a trademark of the SanDisk Corporation. Microsoft®, Windows®, Explorer® are trademarks or registered trademarks in the USA and / or other countries of the Microsoft Corporation. PCMCIA® is a trademark or registered trademark in the USA and / or other countries of the PCMCIA Corporation. WinZip® is a trademark or registered trademark in the USA and / or other countries of WinZip Computing, Inc.

All product names and brand names that have not been mentioned above possibly are trademarks or registered trademarks of the owners.

Notes regarding the software:

You can download the required software "Project Maker" free of charge from our website. You may install and run this software on as many computers as you like. In addition, you are allowed to pass on this software to any third party, e.g. when you rent out or lend your equipment to someone.

5.2 Saving music on the flash memory card

Besides the flash memory card, you will need a card drive. You can order the card drive at Galaxis Showtechnik or buy it from a computer shop. Usually these devices are to be connected to the USB port of your computer. There are also desktop computers with an internal flash card drive. In case you use a notebook, you can connect the flash memory cards to the PCMCIA®-slot by using an adapter.

TIP

If you are using the flash memory card for the first time it is sometimes necessary to format the card first with FAT16 or FAT32. For any detailed information about formatting the flash memory card please read the user manual of your operating system.

Install the card drive first. Follow the steps of the operation manual which should have been provided by the manufacturer of your card drive.

On a CD which is customary in trade, music is being saved in a digital standard. This standard is called "RAW format" and can be read by nearly every computer's disc drive.

On a PC music is usually being processed and saved as a wave file. Many CD burners provide a software application that converts RAW files into wave files.

In case that you do not have such a software to convert RAW files into wave files you may use the freeware program "CDex". You can download this software from the internet. When you download our software "Galaxis Projekt Maker" (see below) you will also find the program "CDex" in the ZIP archive. Follow the instruction given by the software "CDex". Note: In this context we would like to point out that Galaxis Showtechnik is not liable for any software application from a third party.

After you have saved a wave file of your choice on the hard disc of your computer, you can edit the music using an appropriate software. A large numbers of software applications are being provided on the internet to edit music files.

Finally, you will have to convert the wave file to a GPF file because the audio receiver can only play back files of this type. To do so download this software from our website and install it on your PC. Detailed information regarding this is provided in the section "Installing and operating the Project Maker".

You need one flash memory card (containing the correct GPF file) for every PFE Profi Audio that you use.

TIP

Different flash memory cards often vary in speed in which they can provide data. During our test period we discovered a few cards that were too slow for this application. Please check before using the cards for your fireworks display if the cards are suitable for this application. You do not have to worry about this problem if you are ordering your flash memory card at Galaxis Showtechnik. We will provide you a flash memory card which is suitable for this application.

Please check prior to every use if the music file is being played back completely and failure-free from the card because also your PC might have saved a defective file to your flash memory card.

5.3 Installing and operating the "Project Maker"

You need the Project Maker which is a relatively small program to convert wave files into GPF files. The PFE Profi Audio only accepts GPF files.

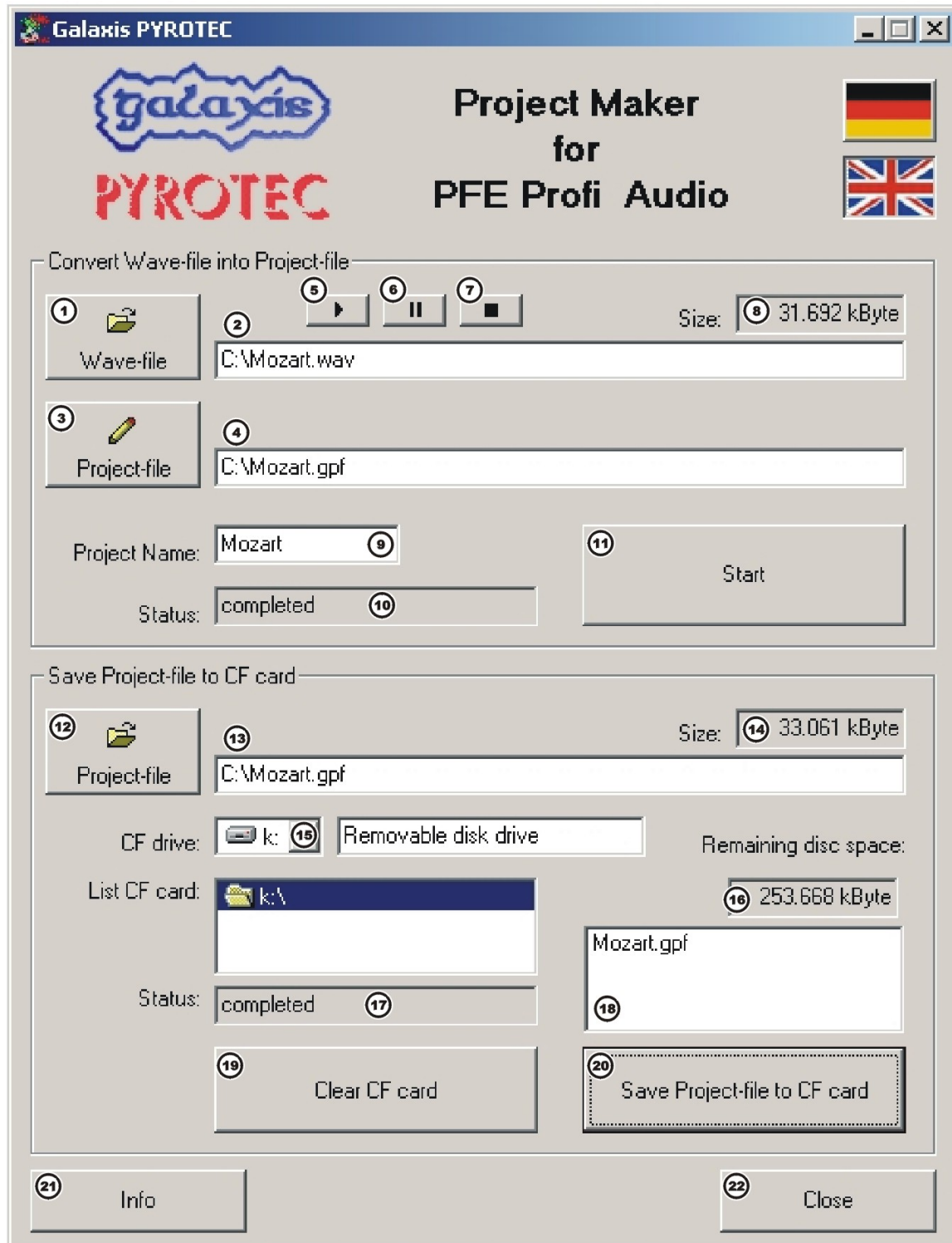
To install the Project Maker please follow these instructions:

- Download the Project Maker from our homepage.
- Unpack the ZIP file.
- Close all other applications.
- Start the file setup.exe.
- The setup assistant will guide you through the installation.

TIP

Please do not change the location in which the different components are being installed. Use the drives and directories suggested by the installation program.

After starting the Project Maker, the following window appears:



To generate a GPF file please follow these instructions:

Mouse-click on button #1 (Wave-File). A pop-up window will open and you can select a wave file. The selected File will only be read and remains totally unchanged. Please confirm your selection by clicking on "Open File". The window then closes automatically.

Field #2 shows the access path (location where the file has been saved to) and the name of the file. Field #8 shows the size of the chosen file.

If a sound card is installed on your PC press button #5 (Play) to do a short test run and to listen to the wave file. Button #6 (Pause) is pause and #7 (Stop) stops the playback of the music.

Please choose the access path and the name for the GPF file which is to be created. To do so please click on #3 (Project-File) and a pop-up window will immediately appear. Please select the location and the name for the file and then click on "Save File". The window is closing now. Field #4 now shows the chosen path and the file name. We recommend that you save the new GPF file to the hard drive of your computer at first.

Please choose a name for your project and enter the name in the box #9 (Project Name). The project name, not the file name, will later be shown in the display of the PFE Profi Audio. If no project name has been chosen so far, "unknown" will be displayed. Mouse-click in the field to activate the cursor and type in the desired project name.

Once you have are finished with your entries click on button #11 (Start) to start the calculation process which converts your wave file into a new GPF file. While the calculation is in progress "Compiling Project File" is being shown in field #10 and the mouse pointer changes into an hourglass. When the conversion is finished "completed" is being displayed in field #10. The time which is needed to convert the file depends on the size of the wave file and the computing power of your PC.

This process has to be carried out only once for every project – independent from the number of flash memory cards that have to be written.

Right after the conversion of the wave file into a GPF file has been finished the new GPF file is ready to be saved to the flash memory card.

To save the GPF file on flash memory card please click on button #12 (Project-File). A pop-up window will open and you can select a GPF file. Please confirm your selection by clicking on "Open File" and the pop-up window will close automatically. Field #13 shows the access path (location where the file has been saved) and the name of the chosen GPF file. Additional information about the size of the file is being shown in field #14.

TIP

The size of a GPF file is always a bit larger than the size of the wave file from which the GPF file has been generated. The difference is usually approx. 1.4 MB.

Now you have to choose the target drive for the writing process of the GPF file. In our case the target drive is the CompactFlash® read/write drive. Please make sure the CompactFlash® read/write drive has been installed correctly and is connected to your PC. Insert the memory card into the slot.

To show a summary of all drives which are installed on your PC please click on the triangular arrow on button #15 (CF-Drive). Please choose the CompactFlash® read/write drive in this selection.

Field #16 shows you the free disk space which is available on the memory card. It is normal that the disk space which is available on the card is a bit less than the value which is written on the card.

If there are already files or folders stored on the data medium, they are being shown in field #18 (Content of drive). In order to delete all these files and folders on the flash memory card click on button #19 (Clear Compact Flash Card). If you want to save the data content please back them up **before** clearing the flash memory card! To make sure that no data which is important to you is lost accidentally you once again have to confirm your intention to delete all data on the flash memory card.

Click on button #20 (Save Project File to CF Card) to copy the GPF file to the flash memory card.

The following error messages can occur:

- If a card with less than 64 MB or with more than 32 GB memory capacity has been inserted the program informs you that this flash memory card can not be used.
- In case that the flash memory card already contains files or folders the program informs you that the card has to be deleted prior to the writing process. This is necessary because of technical reasons.
- If the memory capacity of the card is smaller than the capacity which is needed for the writing process there will be an error message and the process is being cancelled.

As soon as the data is being copied to the flash memory card, "writing project file" is being displayed in field #17. This process is in progress until "completed" is being displayed here. The duration of this process depends on the computing capacity of your PC and on the speed of the interfaces.

When "completed" is being displayed you should wait approx. 15 seconds before you remove the card to make sure that the card is no longer being accessed. If your card drive is equipped with an access LED you wait until this indicator is no longer active and wait 15 seconds in addition before you remove the card.

You can copy the GPF file to as many flash memory cards as you need one after the other. Simply replace the flash memory card in the slot of the CompactFlash® read/write drive and click on button #20 (Save Project File to CF Card) again. Please make sure that you still have selected the CompactFlash® read/write drive as your target drive.

With the help of this program, a GPF file that has been saved to your computer's hard drive, can be copied to your flash memory cards any time you like – again and again.

A mouse-click on button #21 (Info) will show you the contact information and the software version.

To close the Project Maker please click on button #22 (Close).

TIP	Only use the Project Maker to write GPF files to your flash memory card. If you try to copy the GPF files to your flash memory card using other programs (e.g. Microsoft® Windows® Explorer®) some very important requests are not being made. Be aware that using other programs than the Project Maker might possibly cause problems and flawless playback of the file is in question.
TIP	If you want to copy a GPF file to your flash memory card without the converting process from a wave file into a GPF file (i.e. in case that you have already converted the wave file into a GPF file earlier and the GPF file is stored on your PC) simply start the Project Maker and select the file that you want to copy by clicking on button #12 (Project File). That followed please follow the familiar steps to copy the file to flash memory card.

6 Basic operation of the device

6.1 Automatic hardware checks after powering up

As soon as you switch on the device, the hardware is checked for correct function during the start-up sequence.

6.1.1 The error message "Memory Error!"

```
Memory
Error! (0)
```

The device has detected an implausible value in the non-volatile data memory, which is why reliable operation cannot be guaranteed.

The repeated display of this error message indicates a defective memory chip. Please contact us to discuss the next steps. Please also let us know the error code that is displayed.

6.1.2 The message "Memory Maintenance"

```
Memory Main-
tenance: 80%
```

After every 50th time the device is switched on, a so-called memory maintenance is carried out to ensure that the device continues to function correctly even after many years.

Please wait until the progress indicator shows 100% and do not switch the device off under any circumstances. The start-up process will then continue as usual.

6.1.3 Battery monitoring and warning message in case of deep discharges

The battery is being monitored during operation. If a deep discharge has been detected in the receiving mode this event will be stored and a warning signal will be given each time after switching on.

The following example shows the display content. You will hear an acoustic signal in addition.

```
Accu 1x Deep
discharged
```

Here the number of deep discharges is displayed. In this case the battery should be tested or replaced because deep discharges are harmful for the chemistry of the batteries and may reduce life time.

6.2 Reset of acoustic warning "Deep discharge" (AF, Accu Failure)

If a deep discharge is memorized, i.e. the deep discharge counter is greater than 0, the following menu item appears in the main menu in the very last position:

```
AF-Reset?
```

To deactivate the warning sound, please call up the adjacent menu item with "Up".

```
Code?
```

If you have not previously defined your own code for resetting the AF counter, enter the code 0000 to reset the counter. Otherwise, you must enter the customer-specific code you have specified.

6.3 Reset of optical warning "Deep Discharge" (AF, Accu Failure)

You can reset this warning message yourself. To do this, you need a PFC Advanced. To reset the warning message, please contact our support team, who will assist you with this process.

6.4 Switching on the PFE Profi Audio, Operating time

Turn the key switch to switch on the PFE Profi Audio.
The following will be displayed in succession:

Galaxis
PYROTEC

Start screen.

PFE Profi
Audio VX.XX

Product name and software version.

Only if there is a flash memory card with a valid GPF file inside the slot of the PFE Profi Audio, the name of the project will now be shown on the display for a few seconds:

Project:

The name that you have chosen for your project will be shown in the bottom line of the display (first twelve characters only).

If you are operating the device in Multi Track mode (see below), the project names of all files found on the CF card (maximum nine) are listed at intervals of one second. You can cancel this display at any time by pressing "Mode".

After that the device will automatically enter the receiving mode and the standard display will appear.

The maximum operation time is depending on the hardware version. The following values can be expected with the old hardware version: In receiving mode the operating time of the PFE Profi Audio is limited to approx. 6 hours. When the audio track is played back the power consumption increases. If the device is playing back permanently the operating time is reduced to approx. 3 hours. If loudspeakers are used in addition the operating time is reduced even more – depending on the power delivered to the loudspeakers. If the maximum output power of the PFE Profi Audio is being used the operating time is reduced to a little less than one hour. With the new hardware version (older devices can be upgraded anytime) the operation time is doubled: Approx. 12h in receiving mode, approx. 6h when playing back and approx 2h with maximum speaker output power.

If the battery becomes discharged below 30% or less the LED "Akku leer / Laden" is illuminated in red color. This is how all of our products indicate a low battery status. If the device is operating in the play mode or in the menu mode, no battery warning is being showed. Deep discharges (i.e. total discharges) that might possibly occur are being counted and the number of deep discharges is being displayed the time you switch on the device.

7 Menu

The descriptions below are based on the assumption that there is no memory card inside the drive of the PFE Profi Audio and that the device is not being charged at the moment.

If you activate "Mode" with the magnetic pen you will enter the menu. With every activation of "Mode" you will proceed to the next menu item.

The menu items accumulator capacity, accumulator power, radio channel (with version 2.71 or later) interfering signal, the last result of the radio range test and loudspeaker on / off are being shown one after another. You already know these menu items from the transmitter PFS Profi or the controller PFC Advanced and the Advanced receivers. For further information regarding these menu items please see the operation manuals of the other devices.

TIP	The menu item "loudspeaker on / off" is only regarding to the beep signals that are used to acoustically confirm the settings that you choose. Choose "off" to disable the beeps – the music output is not affected in any way. Vice versa you will not hear the beep signals in the audio signal if you choose loudspeaker "on".
------------	---

TIP	With version 2.71 the menu item "Radio Channel" is included in the menu. With older versions this menu item was invoked by switching on the device while all three magnetic sensors "Up", "Down" and "Mode" have been activated.
------------	--

7.1 The menu item "Up/Down Delay/Volume"

By activating "Mode" you will proceed to this menu item and you will see e.g. this setting being displayed:

Up/Down =
Delay

Here you will be able to change the delay time once you are in the receiving mode. With "Up" and "Down" you can change the delay, which is the relative time difference between the start time of the (e.g.) music fireworks and the individual start time of this device. With version 2.71 the delay setting can only be changed while the device is playing back the audio track if the test channel has been fired.

"Up" or "Down" changes the parameter and you will see the following display:

Up/Down =
Volume

Here you can change the setting for the volume with "Up" and "Down" of the speaker output and for the headphone output as soon as you are in the receiving mode. With version 2.71 the delay setting can only be changed while the device is playing back the audio track if the test channel has been fired.

For further information regarding the functions mentioned above, please see the chapters "Receiving mode", "Operation of a headphone", "Operation of speakers" and "Using the delay function".

7.2 The menu item "Channel & Delay keep up/clear"

By activating mode, you proceed to the next menu item:

CH+Delay:
Retain

Here you can choose with "Up" and "Down" if the programmed channels for the start of the audio signal should be deleted or remain in the memory and if the setting for the delay should be set back to 0 meters or remain in the memory.

CH+Delay:
Delete

In this case "Clear" has been chosen. If you confirm the choice with "Mode", the values of the parameters will be deleted.

7.3 The menu item "Operation Mode"

Operat. Mode
Single Tr. ↕

Up to version 2.72d, the device could only be operated in Single Track mode. As of version 3.00, support for a Multi Track mode has been implemented. Use "Up" or "Down" to change the operating mode. In Single Track mode, a maximum of one GPF file can be stored and played from the CF card.

Operat. Mode
Multi Track↕

In Multi Track mode, the device supports up to nine GPF files on the CF card. You can assign a separate start and test channel to each file.

If the device is in Single Track mode, you can set the start and test channel at the end of the menu. If one of the programmed channels is fired the PFE Profi Audio starts to play the music.

Multi Track mode has nothing to do with multi-track playing devices like hard disc recorders. Here it means that several files can be played back after another in a certain sequence. It is not about playing more than one track simultaneously.

The difference between the start channel and the test channel described in detail:

Start channel:

If the start channel is fired the audio receiver begins with playing back the audio track. The device stops not before at the end of the audio file, even if you disarm the firing mode in the meantime (emergency-off). It is not possible to change the values of the parameters delay and volume while the device is playing back in order to respond to the radio command "Pause" without any timing error. Always use the start channel and not the test channel if the device is used for a show. If you want to stop the play mode you can fire the test channel afterwards and then disable the firing mode.

Test channel:

The function is the same as it is with the start channel but the device stops playing back the audio track as soon as you disarm the firing mode. This function is quite useful if you do a sound check. After firing the test channel, the values of the parameters delay and volume can be changed while the device is playing back the audio track.

The ideal setting for the delay parameter can be found fast and easily by changing the delay value while the device is playing back the audio track (dynamic adjustment). Due to the fact that the device needs to continuously check the magnetic sensors it can happen that the command "Pause" is executed with a certain time lag. This can lead to timing errors and due to that you should use the test channel only for sound checks and not for the final show.

TIP

In the following text and on the display illustrations of the PFE Profi Audio "CH" is the abbreviation for "Channel", i.e. firing channel.

The following will be displayed for example:

Start PLAY
with CH: -↕

No start channel has been programmed yet or the start channel has been deleted with the function mentioned above (CH+Delay: Clear).

You can choose a channel with "Up" and "Down". Alternatively, you can program the start channel via radio transmission, using the radio range test function of the PFS Profi or the remote programming function in the manual firing mode of the PFC Advanced or the remote programming in the submenu of the PFS Pocket.

Start PLAY
With CH: 1↕

Channel 1 has been assigned as start channel. This is probably the most common setting.

An activation of mode "Mode" leads you to the next menu item with the parameter test channel. E.g. the following will be shown in the display:

Test PLAY
With CH: -◆

No test channel has been assigned yet or the previously programmed test channel has been deleted with the function mentioned above (CH+Delay: Clear).

Test PLAY
With CH: 999◆

Channel 999 has been assigned as test channel. Channel 999 is a good choice for the test channel to start a sound check without firing a channel which is also programmed for the firing of pyrotechnics.

With a final activation of "Mode" the device is saving all parameters and the changes you have made become operative. Then the device is entering receiving mode.

If you want to operate the device in Multi Track mode, you must assign which files are to be played with which start or test channel. This would make the display of the file names on the small LC display very difficult to read.

The files are therefore assigned via indices. If you operate the device in Multi Track mode, the inserted CF card is checked for its contents. Only files whose file names contain a number from 1-9 as the first character are taken into account. This number specifies the index that is relevant for the assignment later on.

For example, if you want to store nine files on the CF card, they must be named according to the following scheme:

1AnyFileName.GPF
2AnyFileName.GPF
3AnyFileName.GPF
4AnyFileName.GPF
5AnyFileName.GPF
6AnyFileName.GPF
7AnyFileName.GPF
8AnyFileName.GPF
9AnyFileName.GPF

Pay attention to the first character in the file name, which must be a number from 1 to 9. The rest of the file name can be chosen as you wish.

Auto Assign
Channels? ◆

If you have selected Multi Track as the operating mode, you will see this entry as the next menu item. Press "Up" to carry out an automatic channel assignment.

Start Chann.
PLAY: 1◆

Specify the first start channel here, which is linked to the file with the smallest index on the CF card.

Start Chann.
TEST: 991◆

Repeat this step for the desired test channel.

Confirm your selection with "Mode". Automatic channel assignment then takes place. The device checks the inserted CF card for its contents and links all files on it to the corresponding start and test channels. The first channel is assigned to the file with the smallest index. All subsequent eight channels are assigned to the files with ascending indices.

Edit
Channels? ◆

Once you have made an automatic or manual channel assignment, you can check and change the assignments at any time using this menu item. Activate "Up" to display the channel assignments.

PLAY Index 1
With CH: 2◆

In diesem Beispiel sehen Sie, dass die Datei mit dem Index 1 dem Startkanal Nummer 2 zugewiesen wurde. Sie können den Kanal mit "Up" und "Down" ändern. Wenn Sie die Zuweisung bestätigen wollen, drücken Sie "Mode". Dieser Vorgang wird nun für alle neun Indizes wiederholt.

TEST Index 1
With CH:991

After you have gone through all nine start channels, you can repeat the process for all test channels.

Index 2
already used

If you have accidentally made a double assignment, this will be shown on the display with an error message. You then have the option of correcting this assignment.

No File With
Ind. 9 Found

If you have made an assignment whose file with the corresponding index cannot be found on the CF card, you will also receive a warning message. In this case, please check whether you have named all files correctly according to the scheme described above.

TIP

If there is a flash memory card with one or more valid project files inside the drive of the PFE Profi Audio the names of the projects are being displayed again as soon as you leave the menu.

If a flash memory card with one or more valid GPF files has been detected in the drive of the PFE Profi Audio you can choose to play the music at the beginning of the menu. If the device is operated in Single Track mode, you will see the following display:

Play File?
(Test Run)

You can start to play back the file by activating "Up" or "Down". With "Mode" you will enter the next menu item.

00:03
PLAY

"Test run" has been activated. A counter in the upper left corner is counting the time since the start of the audio file in minutes and seconds. The device will enter the next menu item automatically at the end of the file or if you activate "Mode".

You can control the play back of the audio file with "Up" and "Down":

00:47
PLAY >>

You can switch to fast forward by activating "Up". When fast-forward is switched on, the two arrows in the lower right corner are flashing.

01:32
PAUSE

"Down" switches pause on or off. This function has nothing to do with the radio command "Pause". Here the pause function is stopping the play back of the audio file while the device is in the menu item "Play File? (Test Run)". As long as pause is active "PAUSE" is being displayed. During pause the sensors "Mode" and "Up" are inactive and touching them with the magnetic pen is without any effect.

If the device is operated in Multi Track mode, after confirming "Play File?" you have the option of selecting the file to be played using "Up" or "Down" and playing it using "Mode".

8 Receiving mode

Depending on your prior choice in the menu (Up/Down =) either the setting "Delay" or the setting "Volume" is being displayed here:

C:/ -|--
STOP D:+000m

Delay:

With the magnetic sensors "Up" and "Down" on the front panel of the device the delay (delay value) can be varied between -999 and +999 meters. The chosen value will be stored in the memory of the PFE Profi Audio and will be available again after the next start-up even if the device has been switched off.

or

```
C:/      -|--
STOP ■■■■_---
```

Volume:

Using the magnetic sensors "Up" and "Down" on the front panel of the device the volume of the headphone output or respectively the loudspeaker output can be varied. Your setting for the volume will be stored in the memory of the device and will be available again after the next start-up even if the device has been switched off.

To show you that the device is in receiving mode the vertical bar in the upper right corner of the display is moving back and forth.

"C:/" in the upper left corner of the display indicates that there is no card in the slot of the card drive or that no valid GPF file has been found on the card.

If a valid GPF file has been detected on the flash memory card, "C:OK" is being displayed in the upper left corner of the display. The music can only be started by radio command if "C:OK" is being displayed.

If the device is in receiving mode, the project name is being displayed as soon as you insert a flash memory card with a valid GPF file into the slot:

```
Project:
-----
```

The name that you have chosen for your project will be shown in the lower line of the display (first twelve characters only).

Once you remove the flash memory card again, the display will switch from "C:OK" to "C:\".

"STOP" in the lower left corner of the display indicates that the device is currently not playing back.

If the device is operated in Multi Track mode, a list of all project names is displayed instead of a single project name. You can end the list at any time by selecting "Mode".

8.1 Display of radio interferences

The PFE Profi Audio is monitoring the radio channel on which it is receiving regarding radio interferences. If an increased radio interference level has been detected the following warning is being displayed:

```
C:OK RI ---|
STOP ■■■■_---
```

"RI" is flashing in the middle of the upper line of the display. At the same time the backlight of the display is flashing. Please read the operating manual of the standard receivers regarding possible causes for radio interference and how to deal with it.

8.2 Display of the results of the radio range test

Similar to all the other types of receivers that we manufacture we recommend to do a radio range test prior to every usage. Once you have started the radio range test you will see e.g. the following being displayed:

```
Remaining
Range: 75%
```

For further information regarding the radio range test and about how to improve radio range please read the concerning chapters in the operation manual of the standard receivers. After the radio range test the project name is being displayed again.

8.3 Changing of deep discharge counter reset code (accumulator failure, AF)

Change AF-
Reset Code?

If the battery of the device has had a deep discharge in the past and no user-defined reset code has yet been set, the menu item shown here appears.

Code?

After previously actuating "Up", the screen on the left appears. Here you can define a user-defined, four-digit code to reset the acoustic battery error warning message.

Reset of the battery error warning message is explained in the section "Reset of acoustic warning 'deep discharge' " and "Reset of optical warning 'deep discharge' ".

The customized code has the function that a supervisor in the company can reset the warning sound, but not every employee.

8.4 Using the delay function

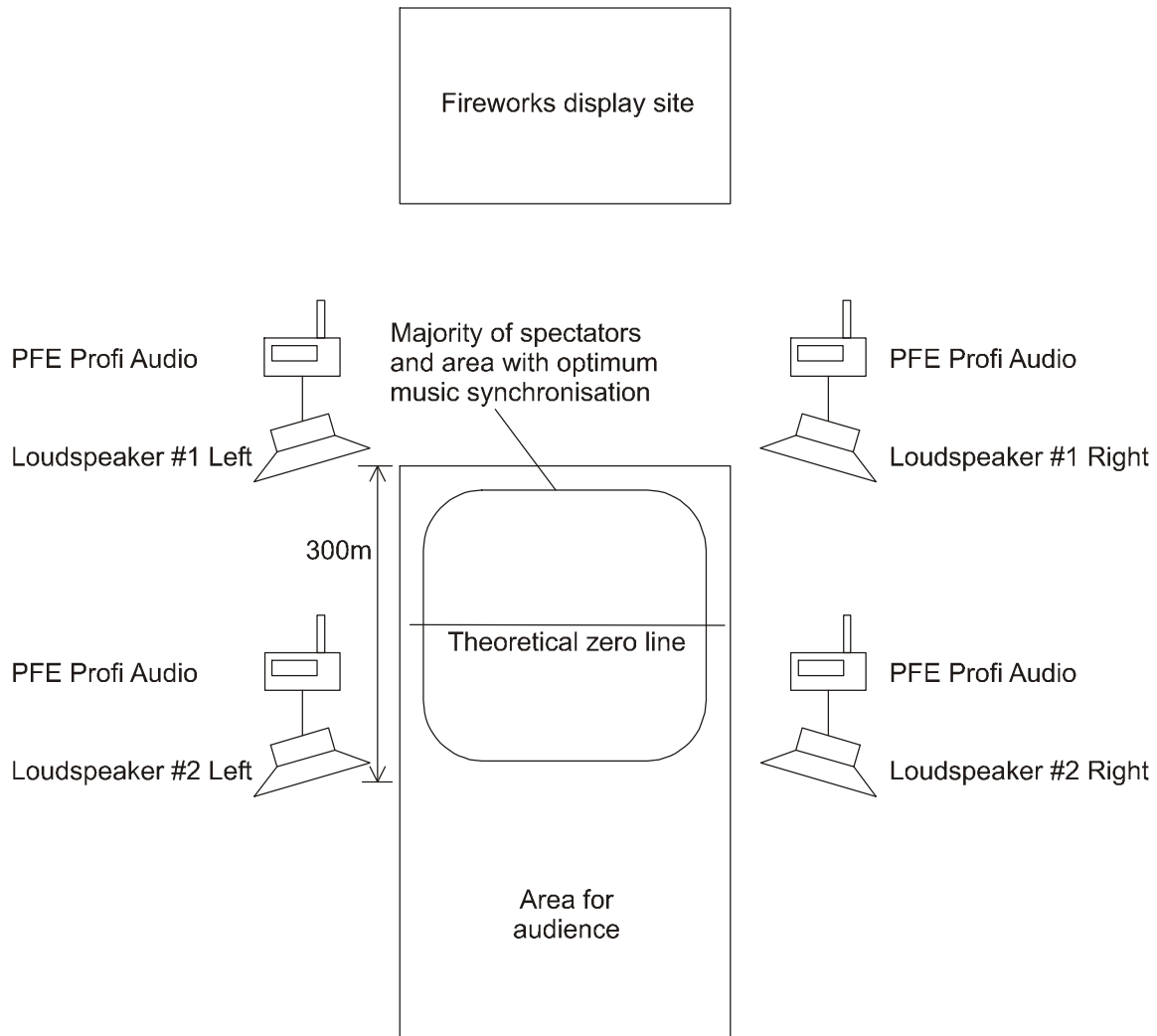
The delay function is a valuable instrument to compensate acoustic delays. This is most important if loudspeakers on different locations are used at the same time so that the audience can hear the signals of two or more loudspeakers that are standing at different distances.

Acoustic signals travel at a speed of approximately 340 meters per second (i.e. acoustic velocity). This can easily cause significant time lags. The objective is that an acoustic signal which is being sent out from a number of loudspeakers on different locations reaches the audience at exactly the same time in order to avoid unwanted echo effects.

The PFE Profi Audio enables you to adjust to the different acoustic delays very precisely (i.e. with a precision of 1 meter). The output controller is calculating the delay for every moment and is consequently playing back the music earlier or later – depending on the calculated time difference.

To adjust the delay please choose "Up/Down = Delay" in the menu. Otherwise the delay value can not be changed and the lastly used value is present (setting from the last time the device was used).

If we assume that you are planning a music synchronized fireworks display the following arrangement could be ideal for you:



If you are using the delay function you always have to program the distance from the PFE Profi Audio to the zero line in meters. If you enter e.g. "+340m" the device will start to play the music one second later. If you enter e.g. "-680m" the music starts to play two seconds earlier.

If the delay function of the PFE Profi Audio is used there is no need for conventional delay lines in the signal path of the PA system at all in many cases. With the conventional solution only positive delays can be realized. With the PFE Profi Audio also negative delays can be programmed and by doing so the absolute timing error, which is caused by the acoustic velocity, can be reduced by 50%. When it comes to music synchronized shows which are choreographed very precisely it makes a big difference if the spectators in the first and in the last row watch the display with a timing error of 1.0 or only 0.5 seconds.

To synchronize the fireworks display as well as possible to your music locate the theoretical zero line in the area with the largest number of spectators. For a fireworks competition it is making sense to locate the theoretical zero line where the jury will be. It absolutely making sense to use positive and negative delays when you operate the PFE Profi Audio. This enables you to significantly reduce the maximum delay to the zero line (e.g. use -300m and +300m instead of +0m and +600m).

For the example shown above the following setting would be perfect:

Loudspeaker #1 left and loudspeaker #1 right: -150m
 Loudspeaker #2 left and loudspeaker #2 right: +150m.

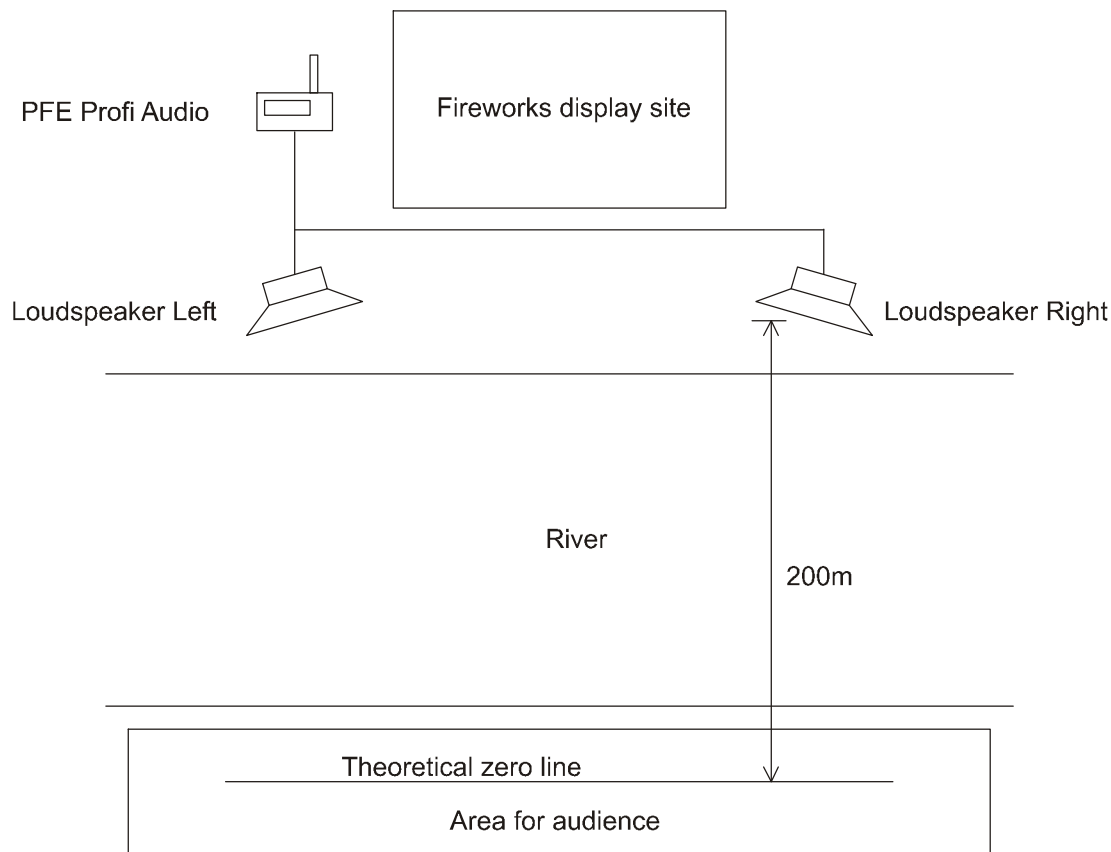
We recommend that you should always do a sound check in order to test if all the settings work perfectly fine in your application before firing the show.

TIP	You can change the delay parameter while the device is playing, too (with version 2.71 only if the test channel has been fired). This way you can determine the perfect setting simply by listening to the music. As soon as you release "Up" or "Down" the new setting becomes valid. If you change the delay setting significantly (steps of more than 10 or even 100 meters) you will hear a short jump in the music as soon as you remove the pen.
------------	---

TIP	If you do not want to use the delay function always make sure that a delay of "+000m" is programmed in order to avoid any unwanted acoustic delays. The fact that no delay is being shown in the display does not necessarily mean that no acoustic delay is programmed. The programmed delay value is only being displayed if you have selected "Up/Down = Delay" in the menu!
------------	---

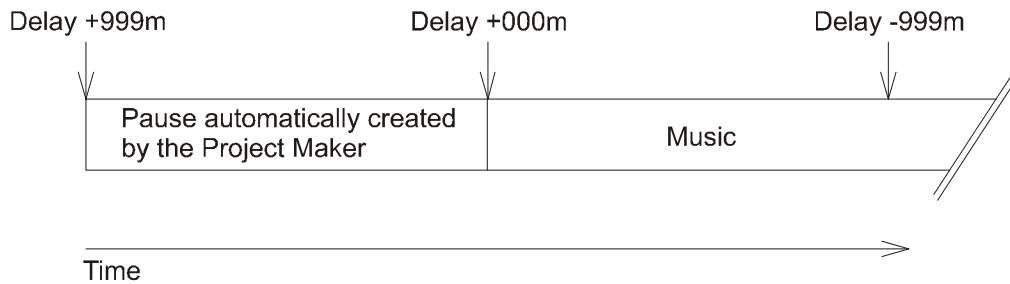
In addition, the delay function can be used to eliminate the time lag caused by acoustic delays in general.

In the next example the acoustic source (i.e. the speakers) is located on a river bank and the audience is standing at the opposite side:



In this example a delay of "-200m" should be used.

Depending on the delay that you have programmed the device begins to play back the music at different points in time. If the delay that you have chosen is positive (e.g. +120m) the device starts to play with a relatively longer or shorter lasting pause and as a result of that the music starts to play a bit later. During the pause the level of the acoustic signal is zero and for that purpose a short pause has been added by the Project Maker when the project file has been created. If you enter a negative delay (e.g. -140m) the device has to begin to play earlier. This means that the device has to start more or less in the middle of the audio track.



To make sure that the music is not being cut off if you use negative delays, we recommend that you put a pause of three seconds at the beginning of your wave file. You can use a large number of different software applications for this kind of modification. Obviously, the wave file that includes the short pause has to be also the basis for your firing script. In general, it might be a good idea to include a short pause of e.g. 10 seconds at the beginning of every wave file. This short pause enables you to stop the performance at the beginning of the project if unexpected problems occur - and no one will notice.

One of the most outstanding features of the PFE Profi Audio is its ability to use already existing PAs and speaker systems of any kind for your music fireworks. At nearly every imaginable event with already existing loudspeakers (e.g. at fun fairs, fairground rides, roller coasters, etc.) music fireworks can easily be arranged without having to set up additional loudspeakers.

Simply hand out a PFE Profi Audio to every person who runs a fair ride with a reasonable speaker system. Comparable to a CD player the PFE Profi Audio can easily be connected to the mixer of the relevant audio systems. Possible echoes can be compensated by doing a sound check and using the delay function. Shortly before the show the staff of the fairground rides only has to select the PFE Profi as audio source on their mixing desk.

8.5 Playing back the audio track

If you switch the transmitter to firing mode and if the PFE Profi Audio has previously detected a valid GPF file on the flash memory card the display illumination of the PFE Profi Audio is being switched on and the following message is displayed for example:

```
C:OK    <!>
STOP D:+150m
```

The symbol "<!>" in the upper right corner of the display should inform staff members, if present, that the playing back of the audio track will be started soon. As long as you remain in the firing mode and as long as the test channel or start channel has not been fired the device remains in this condition.

In this condition possible activations of the sensors by the magnetic pen are automatically being ignored. In case that you disarm the firing mode without having started the music the device switches off the display illumination again and the signs of the receiving mode will appear in the upper right corner of the display.

Once you fire the channel that you have selected earlier in the menu to be the start channel or the test channel, the device starts to play the music, provided that a valid GPF file has been detected on the flash memory card in the slot.

Next the following message is being displayed for example:

```
C:OK    00:08
PLAY D:+150m
```

The GPF file has been recognized. The device has started to play. In the upper right corner of the display there is a counter that counts the minutes and seconds that have already been played back. A delay of "+150m" has been set. This is the equivalent to the time an acoustic signal takes to travel 150m.

The device stops to play at the end of the music or if the device is being switched off. If you switch off the firing mode on the transmitter the music only stops if you have fired the test channel before.

TIP	In the case that start channel and test channel are identical the music stops if you switch off the firing mode on the transmitter.
TIP	If you want to stop the music via radio transmission even after the start channel has been fired simply fire the test channel and then disarm the firing mode.
TIP	If you trigger the playback of a file in Multi Track mode while the device is already playing a file, a time error will occur for technical reasons. You should therefore avoid this if a time error is unacceptable.

8.6 Radio commands "Pause" und "Resume Play"

This function requires firmware version 2.71 or later in the Audio receiver and firmware version 2.7c or later in the controller PFC Advanced.

The intended usage of these radio commands is to pause with playing back the music and with firing the cues during a music synchronized fireworks display in order to wait some time until the smoke has vanished.

TIP	If you want use this function it is very important that you have started the playing mode with the start channel and not with the test channel. Otherwise timing errors can occur if this function is utilized.
------------	---

You will find the "Pause" function in the automatic firing mode of the PFC.

```
C:OK 05:41
PLAY D:+000m
```

First, we assume that the device is playing back the file because the start channel has been fired. You will see for example this being displayed.

```
C:OK 05:43
|| D:+000m
```

The user has pressed the "Pause" button once and the button has been released again. By doing so the controller has sent the radio command "Pause" and the PFE Profi Audio has received this. The device stopped the play mode immediately until the command "Resume Play" is received.

```
C:OK 05:45
PLAY D:+000m
```

The pause condition has been released at the controller by pressing the "Pause" button again. The command "Resume Play" has been sent by the controller and the PFE Profi Audio received this. The device continues to play back the file. The automatic firing mode of the PFC and the audio receiver are still synchronous.

The pause function can be used again and again one after another. The timing error will be extremely small if the PFE Profi Audio has been started with the start channel and not with the test channel (the error is less than 1.6 ms after 20x Pause / Resume Play).

TIP	Pay attention that you press the pause button again if you want to resume and not the fire button! With the fire button you will fire the next cue and you will lose synchrony between the PFC and the PFE Profi Audio.
------------	---

8.7 The output of time code signals (SMPTE)

You can also use the PFE Profi Audio to provide time code signals for other applications or systems.

It is possible to play the music on one of the two stereo channels and the time code signal on the other as well.

If you are using the Galaxis Composer software the provided operation manual explains which settings are necessary to make sure that the audio tracks are being processed correctly when an AVE

file is being created. This is absolutely necessary to ensure that the audio information is being displayed on the screen as a meaningful curve. In this context this manual will also explain why the Composer needs to create an AVE file.

If you want to play back time code, we strongly recommend to generate the necessary wave file with the Composer. The user manual of the controller PFC Advanced describes in detail what has to be minded when time code should be utilized.

8.8 Teach-in of the system ID

A teach-in of the device can be done with every PFC Advanced, PFS Pocket and PFM Advanced USB Radio Modem. The teach-in is for example necessary if you lend or rent out the PFE Profi to another user or if you want to split your existing firing system into several systems in order to perform several shows on locations which are not far away from each other.

Follow these steps to teach-in the device:

1. Switch on your controller PFC Advanced and if necessary, choose the desired system code in the menu item "System ID Management" which is ranging from 1 to 5. Every system has been programmed to a customer specific system ID which can be differentiated into five sub system codes. So, system code 1 of customer A is not the same as system code 1 of customer B.
2. Leave this menu item and invoke the menu item "Transmit System ID".
3. Switch on the PFE Profi Audio and wait until the device reaches the receiving mode.
4. Press the touch button "Transmit System ID" on the screen of the PFC.
5. Activate "Up" on the PFE Profi Audio within two seconds after sending the teach-in command.
6. If the PFE Profi Audio has received the command it will do a reset and start again.
7. Now you should do a test if the PFE Profi Audio responds to the commands of the PFC with the system ID which has been selected before e.g. by starting the play function remotely or by performing a range test.

9 Connecting the PFE Profi Audio to a PA system

You should use the "Line" outputs to connect the PFE Profi Audio to a PA system. The signal level of these output signals is according to the standard and cannot be varied. The distortion factor is extremely low on these outputs.

In the case that you need an output with an adjustable volume for the signal (e.g. if you use active loudspeakers and the volume of the music cannot be adjusted) you can use the output for the headphone, too. Be aware that if you use the headphone output the maximum level of the signal is much higher than the standard level. Please begin with the lowest volume setting and increase the volume carefully until the desired level is reached. Also, the distortion factor is higher on these outputs compared to the line outputs.

Make sure that prior to switching the PFE Profi Audio on or off and prior to connecting or disconnecting any plugs the volume of your amplifier has been turned to 0 to avoid that noise becomes audible.

10 Operation of a headphone

Plug the headphone's plug into the headphone jack of the PFE Profi Audio. When you buy the PFE Profi Audio an appropriate headphone is being included in the delivery.

You can adjust the volume for the headphone with "Up" and "Down" In the receiving mode provided that you have chosen "Up / Down = Volume" prior in the menu. Otherwise the previously chosen volume setting (setting from the last use) is active and cannot be changed. While the device is playing back the audio track the parameter volume can only be changed if the test channel has been fired. You will find further information regarding this in the section "Menu, the difference between the start channel and the test channel described in detail".

A bar displays the setting of the volume. To change the volume please point the magnetic pen to the sensor areas "Up" or "Down" for a few moments. The volume is turned up or down automatically if the magnetic pen remains on the sensor area longer until the maximum or minimum value is reached. You will hear short beep for every step.

11 Operation of speakers

Loudspeakers can be connected directly to the loudspeaker outputs (2x 3.5 mm Mono jacks). The minimum impedance for the speakers is 4 Ohm.

The volume of the loudspeaker outputs can be adjusted similarly to the headphone output. As soon as a headphone is being connected to the headphone output the loudspeaker outputs are being switched off automatically.

The output is 2 watt sinus per channel. This is enough for a reasonable audio performance for a small audience (some persons standing next to the speakers). The direct connection of speakers to the PFE Profi Audio has only been designed for the purpose of test runs and to monitor the performance during the use of the device.

12 Protection against moisture and humidity

This device is not waterproof. Always protect it from moisture, humidity and water.

13 Maintenance

In general, the PFE Profi Audio does not need any specific maintenance when used thoroughly. However, we recommend sending the device back to the manufacturer every 1 to 2 years for a general check of all device functions.

14 Warranty

The warranty period is 24 months.

If there is any defect during this period please pack the device properly and send it to the manufacturer with carriage paid to have it repaired free of charge. Please do not forget to attach a description of the symptoms that have occurred.

Warranty is excluded if the device was damaged due to wrong usage or excessive stress.

Unauthorized repairs and the use of non-original parts will void all warranty, guarantee and product liability claims with immediate effect.

15 Damages caused by malfunction, misuse, abuse or neglect

This device has been designed for playing audio files. Discuss all other applications with the manufacturer before use. In the case that one of the events stated above had happened we are only liable if the causation was due to faulty workmanship or component parts. The devices have been developed, manufactured, and tested to the best of our knowledge and belief.

Please follow the instructions in section 'protection against moisture and humidity'.

16 Technical data

Radio parameters	<p>Frequency Band: 433.05 - 434.79 MHz Channel Spacing: 25 kHz Number of radio channels: 32 (433.875 - 434.650 MHz) Modulation: FM narrow band Frequency Shift: +/- 3 kHz Radio equipment class according to 2014/53/EU (RED): 1 Radio equipment type: non-specific short-range device, receiver Receiver Category according to ETSI EN 300 220 V3.1.1: demanded by the application: 3 (lowest performance level) fulfilled by the device: 1 (best performance level) The receiver category indicates how well the device can still receive radio protocols when strong signals are present on frequencies below and above the used frequency (blocking). Receiver Principle: Double superheterodyne Receiver Sensitivity: -119 dBm @ 12 dB SINAD Wave Length: 70 cm Standard antenna included in delivery: Center Frequency: 434 MHz Radiation Pattern: omnidirectional Radiator Length: Lambda/4, not coiled Antenna Gain: 0.00 dBd, 2.15 dBi</p>
Protocol parameters	<p>simplex, PCM with Manchester coding, Checksum: 40 Bit CRC, data rate approx. 2,500 bps</p>
Temperature range	<p>Transport und storage: -30 to +70°C Operation: -20 to +65°C The maximum temperature difference between devices must not exceed 60 K in order to enable unimpaired radio communication. Optimal storage temperature for longest battery life: +10 to +20°C</p>
Humidity	<p>10 - 90% rH, no condensation</p>
Allowable altitudes above sea level	<p>Storage and transport: -500 to 12,500 m Operation: -500 to 4,000 m</p>
Protection class	<p>III</p>
Operating time	<p>Old hardware version: Receive mode only: 6 h, PLAY (no use of the speakers): 3 h, PLAY (including the use of the speakers): depending on the volume 1 - 3 h New hardware version or after hardware upgrade: Receive mode only: 12 h, PLAY (no use of the speakers): 6 h, PLAY (including the use of the speakers): depending on the volume 2 - 6 h</p>

Range	with standard antenna: up to 800 m, with antenna extension cable: up to 2,000 m
Data medium	CompactFlash® memory card type 1, Minimum memory capacity: 64 MB, Maximum memory capacity: 1024 MB (approval of operation for larger memory capacities will follow)
Sampling rate	44,100 Hz
Audio channels	2 (stereo or mono + time code)
Bits per channel and sample	16
Number of digital-analogue converters	2 (due to that no increased noise level occurs compared to systems with only a single digital-analogue converter; single digital-analogue converter systems cause unwanted noise when switching between channels 44,100 times per second)
Timing deviation in percent	maximum +/- 0.003 %
Timing deviation as an absolute value	maximum 0.11 seconds per 60 minutes play
Frequency response at the line output	20 – 20,000 Hz +/- 0.5 dB
Noise at the line output	12 µV
Distortion at the line output at full modulation	0.008 %
Impedance of the line output	10 kOhm
Maximum power per loudspeaker output	2 Watt RMS
Distortion at the loudspeaker output (@1 kHz, @1 Watt)	0.22 %
Allowable impedance of the headphone	>= 25 Ohm
Allowable impedance of the loudspeakers	>= 4 Ohm

Dimensions (L x W x H) and weight, each without antenna:

210-103-74 mm; 1.400 kg

Power supply and charging concept:

1 x 12 V, 2 Ah, sealed lead acid type rechargeable battery, PYROTEC charging device

Supplied accessories, included in delivery:

1 Standard antenna
2 Keys
1 Charging unit
1 Stereo headphone (3.5 mm stereo jack)
1 CF Card with a capacity of 1 GB
1 User manual

Charging unit:

Mains voltage	100-240 VAC, 50-60 Hz
Power consumption	typ. 4.5 Watts
Charging time	Full charge within 14 h, no danger of overcharging, automatic trickle charge
Dimensions	L-W-H 80-74-29 mm
Weight	0.07 kg

17 Accessories

Below is a list of original accessories that can be obtained from the manufacturer or authorized distributors at any time. The device may only be operated with these original accessories. Otherwise, all claims arising from warranty, guarantee and product liability will become void with immediate effect.

Item No.:	Description:
1341	Antenna extension cable 1m
1342	Antenna extension cable 2m
1345	Antenna extension cable 5m
1343	BNC-BNC adaptor
1351	CF Card, Capacity 1GB
1360	CF card reader/writer 6in1 for USB
1301	Charging unit Profi series
1311	Magnetic pen
1302	Multi charging unit for up to 10 Profi devices
1312	Key 901
1320	Standard antenna
1322	Superscan 71, high gain antenna. Only approved for being used in receiving mode!

18 CE marking

This device is marked with the CE logo:



Each device is accompanied by an EU Declaration of Conformity.

19 Address of the manufacturer and contact details for requesting an EU declaration of conformity

Galaxis Showtechnik GmbH
Lohgerberstr. 2
84524 Neuötting
Germany

Tel.: +49 / 8671 / 73411
Fax: +49 / 8671 / 73513

Homepage: www.galaxis-showtechnik.de
E-Mail: info@galaxis-showtechnik.de

Please use these contact details if you want to request an EU declaration of conformity.

Each device is accompanied by an EU Declaration of Conformity.